

KMTNet dome operation with AUX computer

1. Turn on the dome power switch in the dome



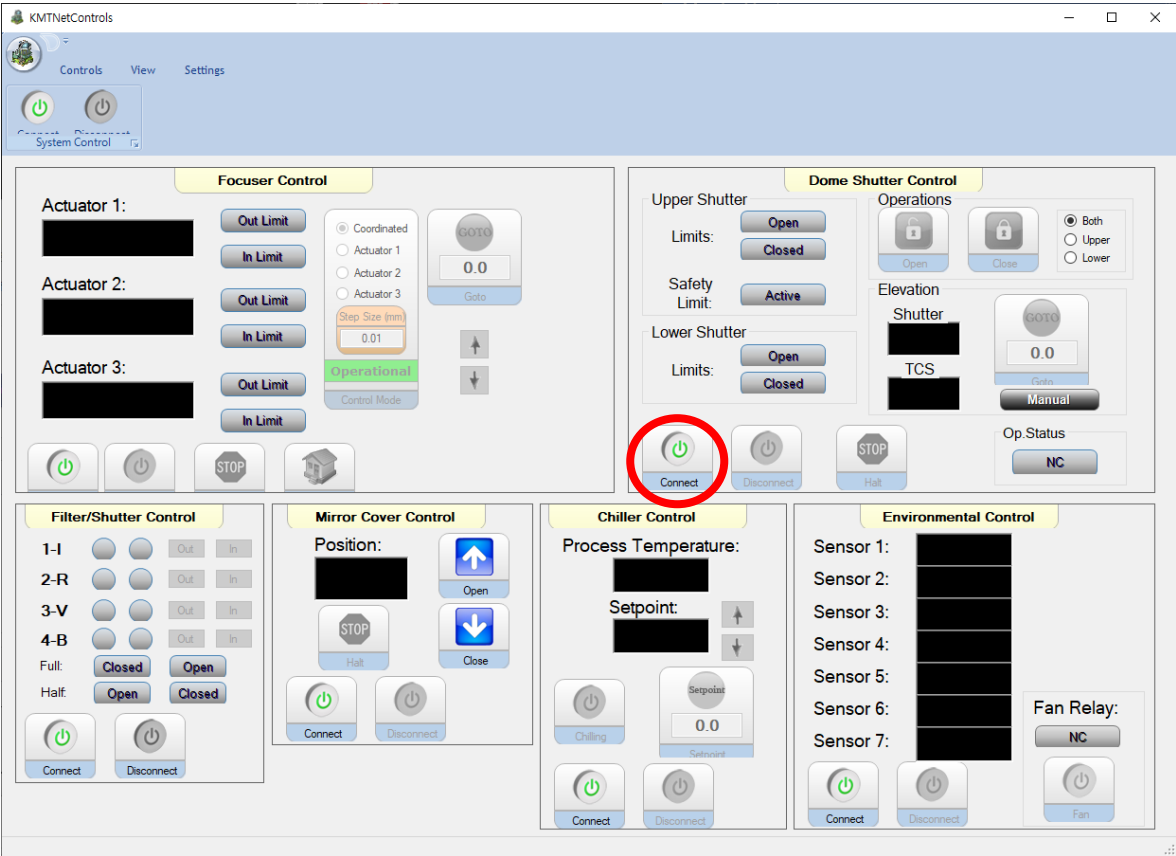
2. Switch the shutter control switch to REMOTE from local on the dome control box



3. Right side switch should be located between UPR and LWR



4. Click the connect button in the KMTNet Controls software on the AUX computer



5. Select the both and click the open button in the KMTNet Controls software

